

SOCIAL DETERMINANTS OF
HEALTH &

SUSTAINABLE DEVELOPMENT
GOALS

IN RELATION TO ENVIRONMENTAL
HEALTH

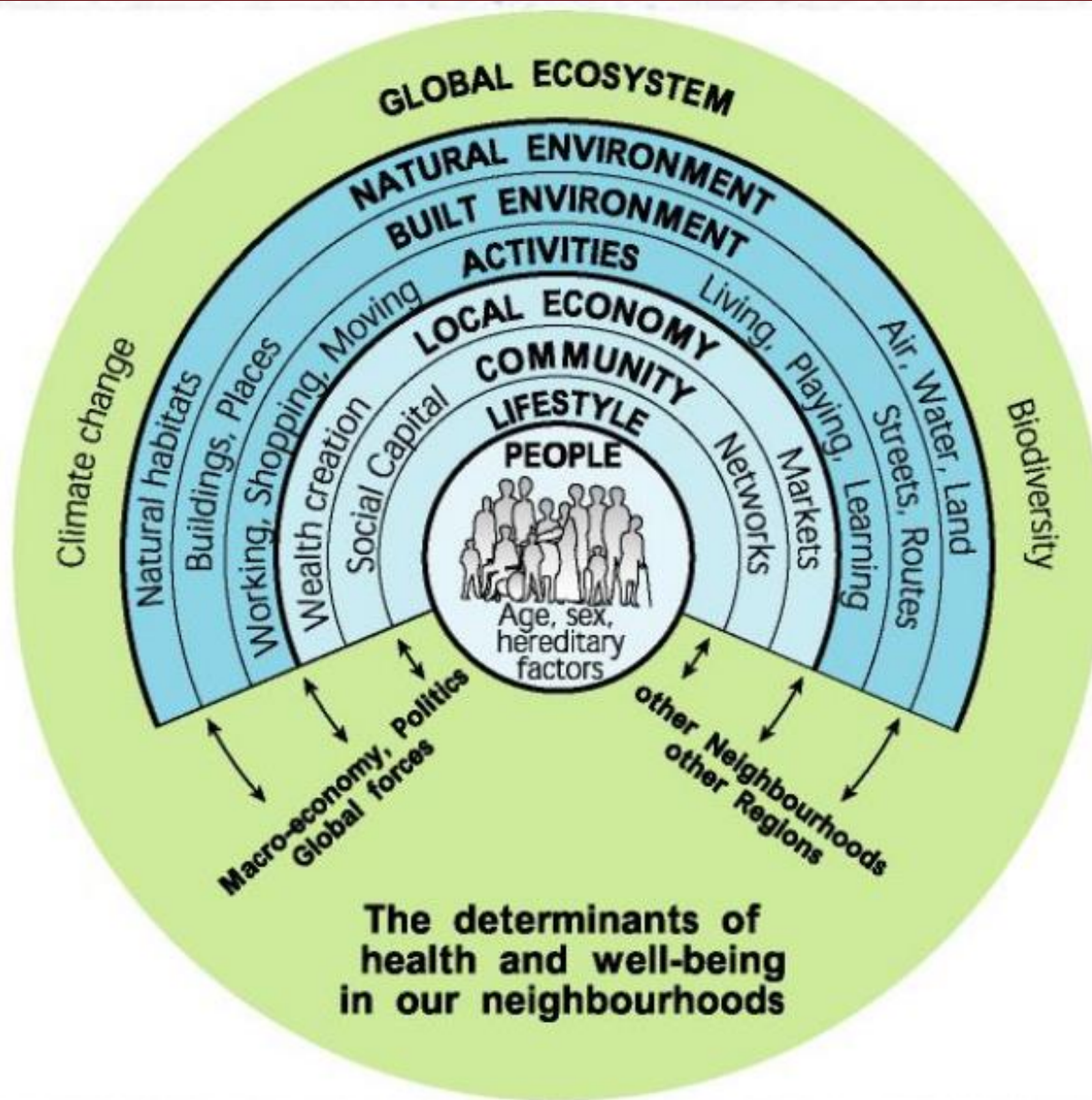


*SAIEH CPD workshop 6 May
2022*

Ana Bigara



DETERMINANTS OF HEALTH & WELL-BEING



HEALTH MAP - LOCAL HUMAN HABITAT
BARTON & GRANT (2006) ADAPTED
DAHLGREN & WHITEHEAD (1991)

SOCIAL DETERMINANTS OF HEALTH (SDH)

Conditions – places

People

live, learn, work & play

affect – health & quality

risks & outcomes



WHY SHOULD ENVIRONMENTAL HEALTH PERSONNEL BE CONCERNED?



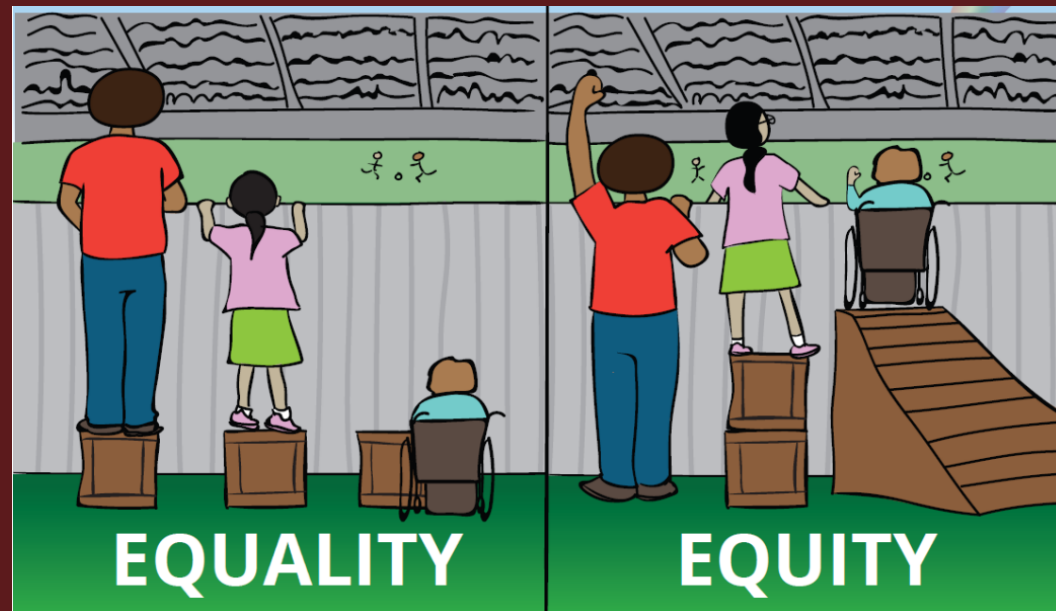
Action on social determinants
of health (SDH)



Reduce inequities in health

EQUALITY: EVERYONE SHOULD
RECEIVE THE SAME

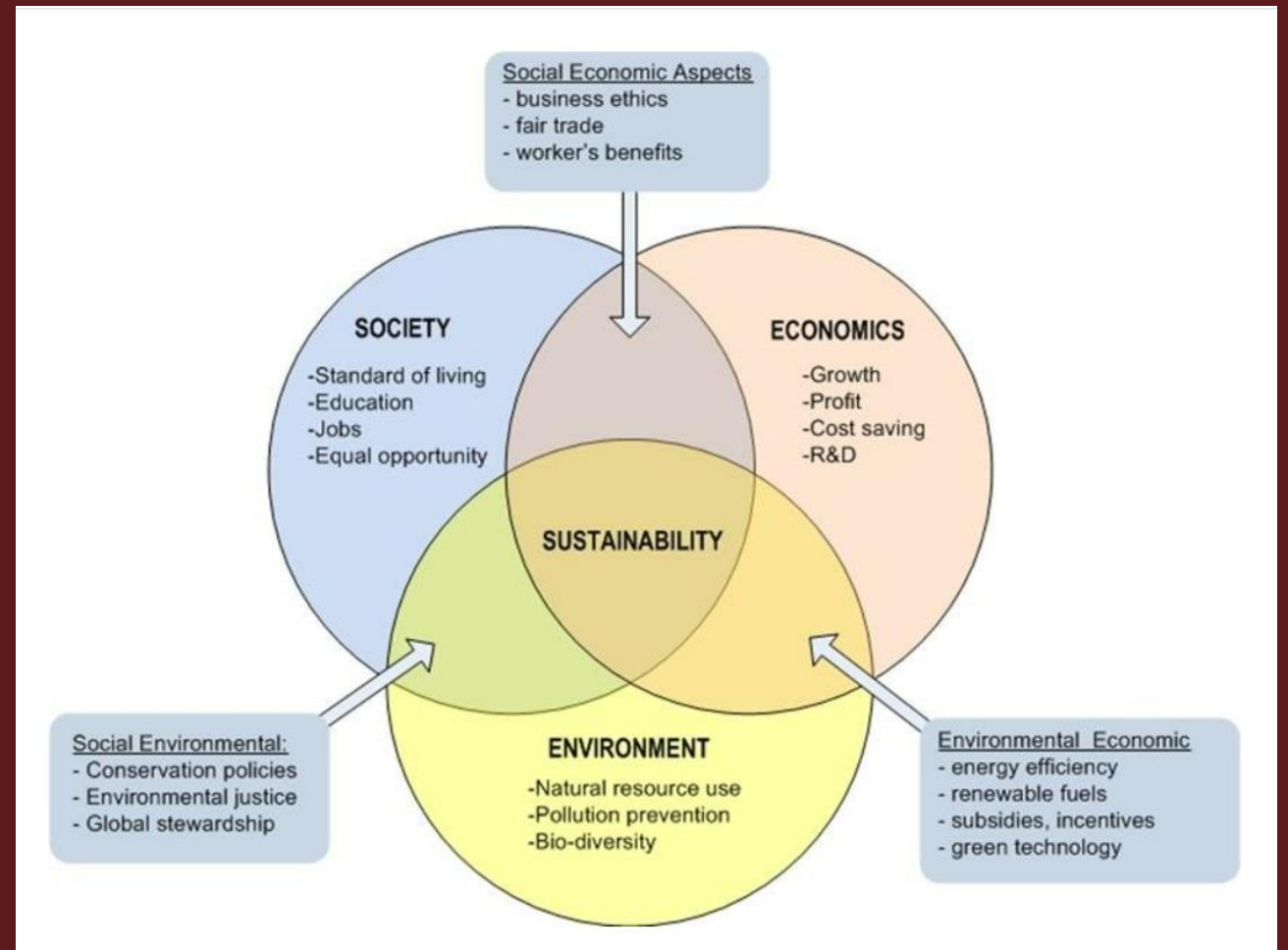
INEQUITY: AVOIDABLE
STRUCTURAL PROBLEMS IN OUR
COMMUNITIES



INEQUITIES IN THESE CONDITIONS

- Driven by inequities in
- Power, money & resources
- In turn drive inequities in health

https://www.researchgate.net/figure/Interplay-of-the-environmental-economic-and-social-aspects-of-sustainable-development_fig1_330762891



RATIONALE FOR ACTION

- Improve lives – poorer areas
- social & environmental factors influences
- 45% - 60% variation – health status

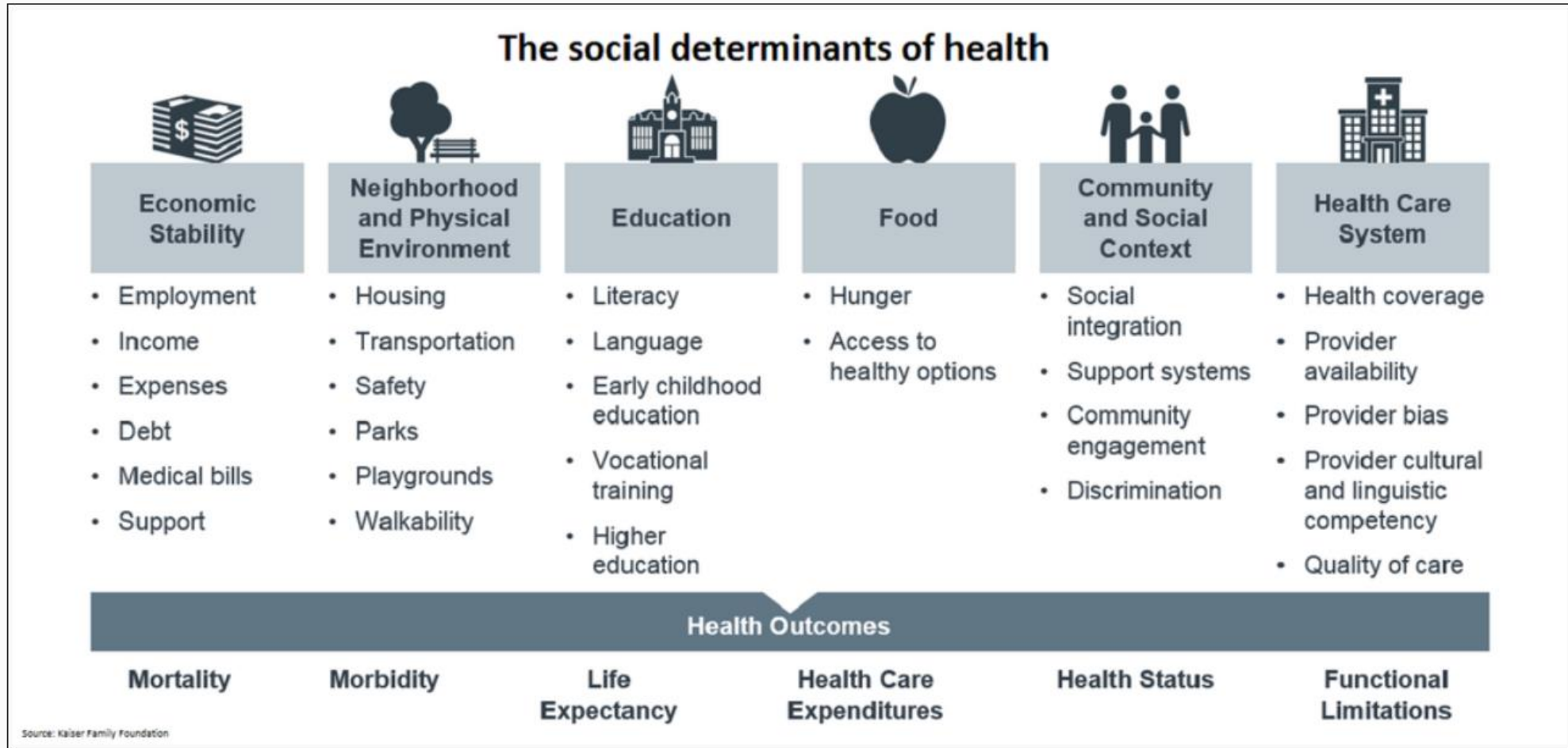


UNIVERSAL HEALTH ACCESS (UHC) – TO GOOD HEALTH CARE

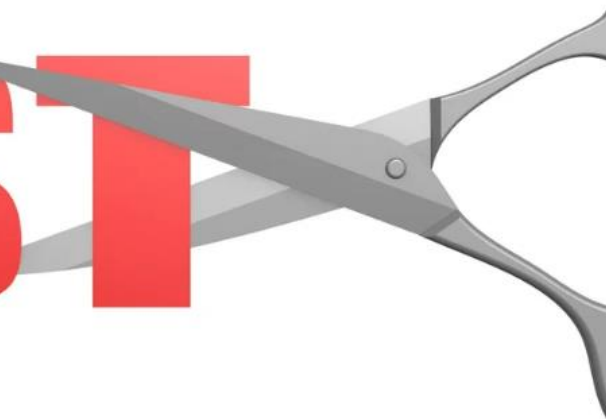


- Necessary but insufficient
- optimize health of populations
- reduce inequities in health
- Free UHC - e.g., UK - large & persistent inequalities health between social groups
- Why?
- Communicable diseases & non-communicable diseases
- Acting - at point person presents with health problem - too late

The social determinants of health influence access to and effectiveness of health and mental health care.



COST



Five conditions that work together to build a health and care system with a culture of compassionate leadership where everybody has the skills they need to make improvements every day.



IMPROVE HEALTH – REDUCE INEQUALITIES

- REDUCE COSTS – HEALTHCARE
- Improve conditions people
- Born - Live
- Work - Age
- NB – go beyond healthcare sector
- Action – national & local – improve social determinants health